



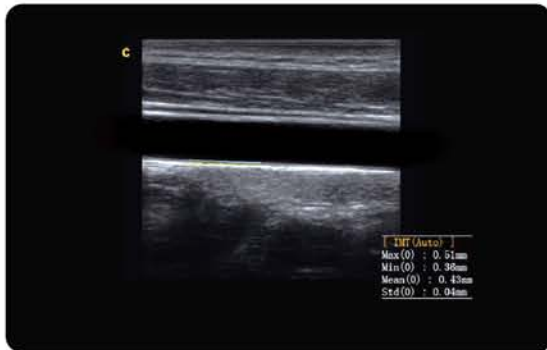
**i9**

*A Premium System Built Into The Future*



**CHISON**  
Value Beyond Imaging

# IMT Function

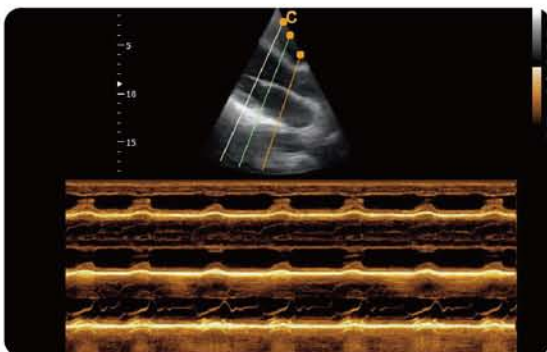


Automatically traces the intima, and measures the thickness of the intima. This allows you to measure the intima faster, more easily and more accurately.





## Free Steering M Mode



---

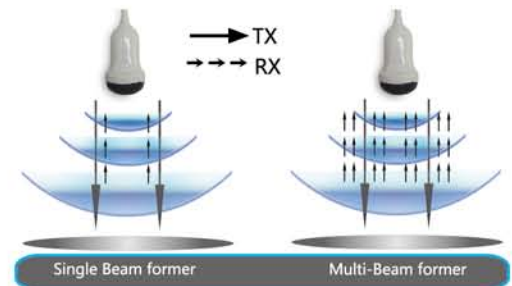
The cursor line can be rotated in 360 degree and adjusted to the position you want. Moreover, there are three cursor lines that can be adjusted in same phase, which greatly enhance the diagnostic efficiency!

---



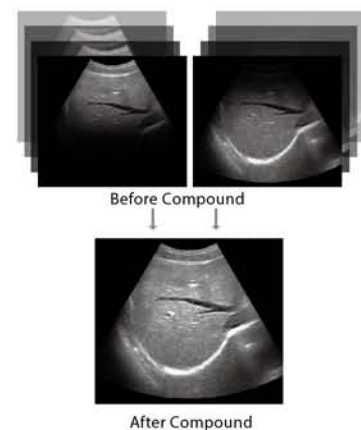
## Multi-beam Former Technology

- Enhance signal processing speed
- Enhance time resolution
- Improve spatial resolution



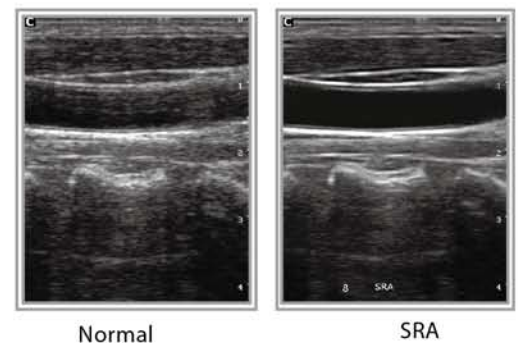
## Compound Technology

The traditional Compound imaging technologies improve the image quality, but lose the frame rate, which affect diagnosis convenience and efficiency. Our Compound imaging has integrated multiple key factors like frequency, focus and time, but will not sacrifice the frame rate.



## Speckle Reduction Algorithm(SRA)

SRA is the technique that uses a variety of denoising algorithm to suppress speckle, smooth the tissue images, and make the faint edge more appearing.



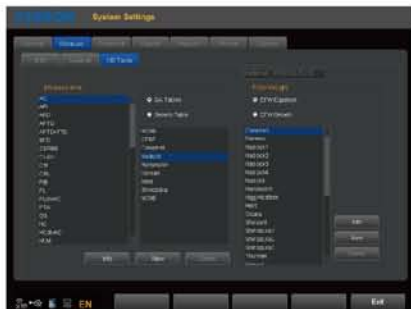


# Streamlined Workflow

---

The multi-purpose user presets, comprehensive measurement & report system, built-in EasyView image archive system, quick image storage/retrieve/transfer, one-button direct print, 4D direct burning to CD makes the complete workflow better than what you can dream of.

---



Various Measurements



Detailed Reports



EasyView image archive system

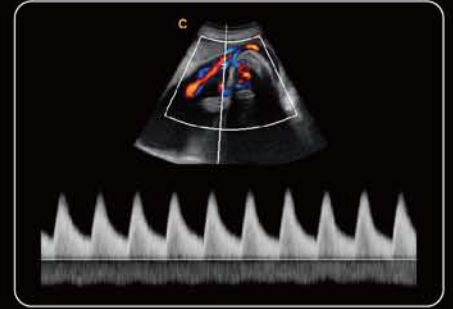
# Clinical Value and Applications



Liver, B Mode



Liver Kidney, B Mode



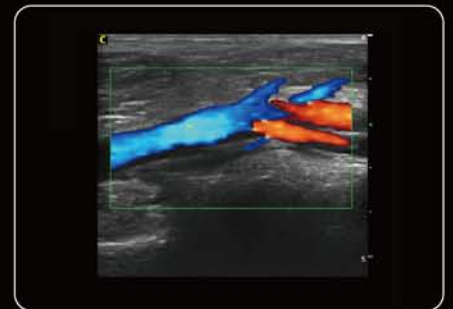
Umbilical Cord , PW Mode



Ovary, B Mode



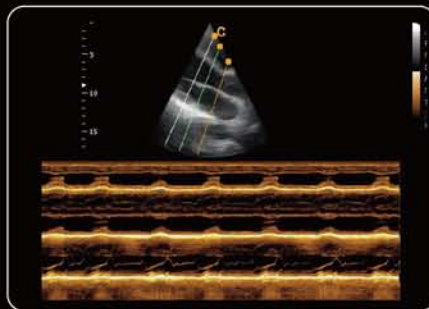
Early Pregnancy, B Mode



Popliteal Vein, CFM Mode



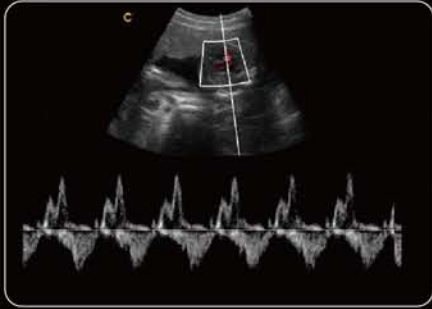
Elbow Joint, B Mode



Cardiac, Free M Mode



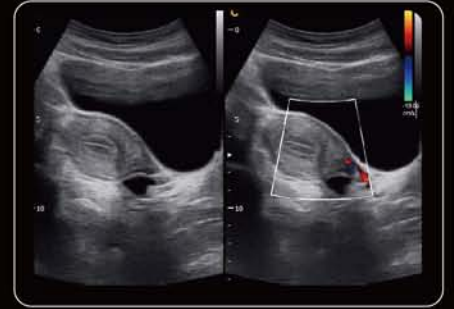
Four Chambers View, ECG



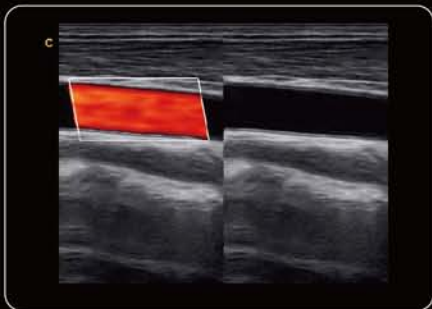
Fetal Heart, PW Mode



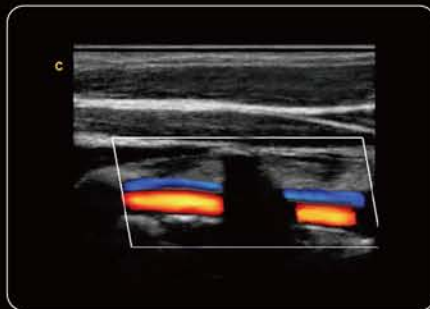
Umbilical Cord, CFM Mode



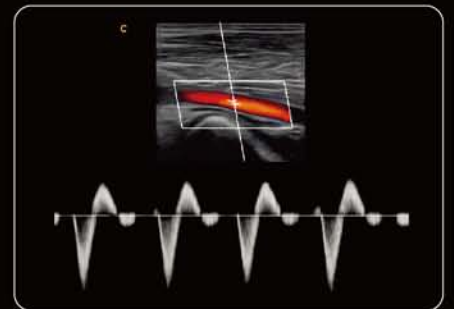
Uterus, B/BC Mode



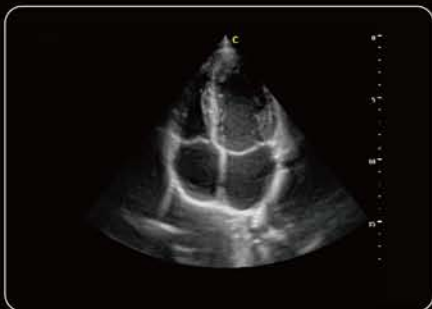
Carotid, BBC Mode



Vertebral Artery, CFM Mode



Femoral Artery, PW Mode



Apical Four Chambers, B Mode



Fetal Legs, 4D



Fetal Face, 31 Weeks



# Specifications

## Imaging modes

- B, 2B, 4B, B/M, M
- CFM
- PW Mode
- Power Doppler / Directional PD
- Trapezoidal
- Real-time 4D (Option)
- Chroma B/PW
- CW (Option)

## Probes

- Linear probe
- Transvaginal probe
- Phased array probe
- 4D Volume probe

## Image processing technology

- THI
- Speckle Reduction Algorithm (SRA)
- Compound technology
- i-Image : image optimization software

## Measurement & Report packages

- OB&GYN
- Vascular
- Urology
- Small Parts
- Cardiac

## Widely Clinical Applications

- Abdominal
- Obstetrics
- Gynecology
- Cardiac
- Vascular and Small Parts
- Pediatric
- Urology
- Musculoskeletal

## Standard configuration

Main unit, 19" LCD, 4 probe connectors,  
Hard disk (500GB), DVD-RW, 8 USB ports, Gel warmer

## Options

- 2.0MHz-6.4MHz Convex probe
- 5.0MHz-12.0MHz Linear probe
- 4.0MHz-10.0MHz Transvaginal probe
- 4.0MHz-13.0MHz Transvaginal probe
- 2.5MHz-4.0MHz Phased array probe
- CW
- ECG
- 4D package: including 4D volume probe, 4D software and 4D hardware module
- Video printer( Mitsubishi P93W-Z or Mitsubishi P95 DW-N)
- DICOM 3.0
- i-Image: image optimization software
- Biopsy kit: for convex, linear, TV probe
- Foot-switch